

Domestic Violence and Abuse Profile

Natalia
Urry

Research & Intelligence Officer

natalia_urry@bathnes.gov.uk

01225
477258

Bath and North East Somerset – *The place to live, work and visit*

Domestic Abuse Profile

- » Definition
- » Overall rates and trends
- » Abuse characteristics
- » Offender profile
- » Victim profile
- » Understanding and recording domestic abuse

Bath and North East Somerset – *The place to live, work and visit*

Cabinet Office (2012) 'New definition of domestic violence and abuse to include 16 and 17 year olds'

“Any incident or pattern of incidents of controlling, coercive or threatening behaviour, violence or abuse between those aged 16 or over who are or have been intimate partners or family members regardless of gender or sexuality. This can encompass, but is not limited to, the following types of abuse: psychological; physical; sexual; financial; emotional.”

Source <http://www.dpm.cabinetoffice.gov.uk/news/new-definition-domestic-violence-abuse-include-16-17-year-olds>

Bath and North East Somerset – *The place to live, work and visit*

Overall rates and trends



- » **~70** recorded crimes a month (840 each year)
- » **178%** increase in adult safeguarding referrals 08/09 to 11/12

Bath and North East Somerset – *The place to live, work and visit*

Bath & North East Somerset Council

» **683** cases at Multi-Agency Risk Assessment Conference in 3 years (**23%** repeats)

» **1,328** notifications to children's safeguarding

» Locally, domestic abuse experienced by women costs

Biggest single cost to physical and mental health services

£17m each year

£3.6m

Bath and North East Somerset – *The place to live, work and visit*

Bath & North East Somerset Council

Abuse characteristics

» Type of abuse

» **Violence** most common crime

» **Physical, emotional & financial abuse** most common safeguarding referral

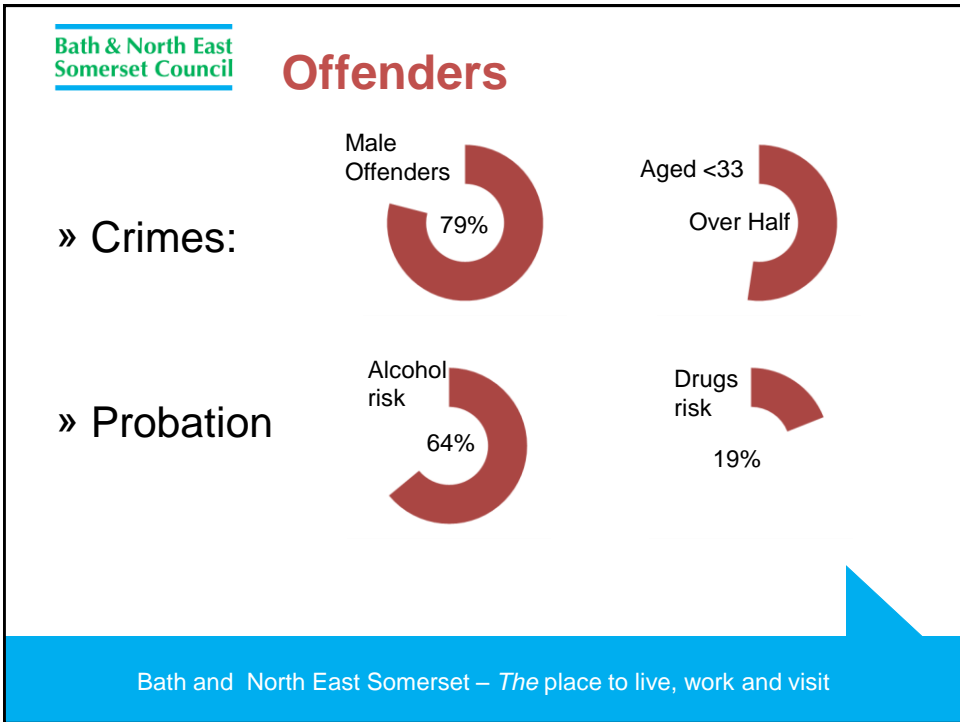
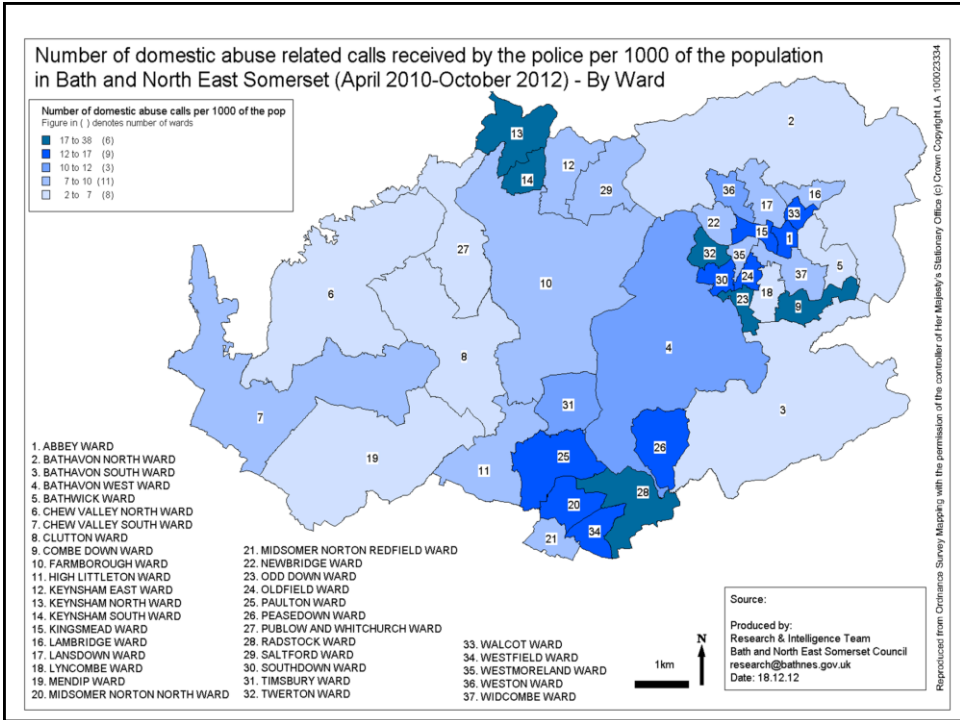
» Crimes commonly between **7pm and Midnight**

» Common locations

» Recorded crimes – **on street**

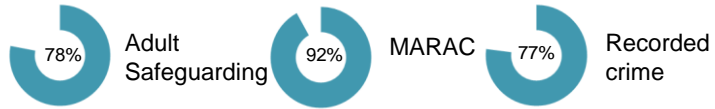
» Safeguarding – **In the home**

Bath and North East Somerset – *The place to live, work and visit*



Victims

» Women most commonly recorded victims



» 19% of male victims have told someone, vs. 44% of females

» Age of victims:

- » Even spread between 16-45 (crime)
- » Majority over 65 (adult safeguarding)

» Women with ill health or a disability are 2x times more likely to be victims



» Victims are 3x more likely to have mental health or anxiety disorders



» 59% of adult safeguarding referrals had physical disabilities

» Studies suggest victims would most prefer to receive support from **Doctors** amongst any professional



Recording & understanding

- » Nationally only 15% of victims have any record on NHS care record
- » Significant issue with recording DA related hospital admissions
- » No mental health information held by local providers